

Descriptive Statistics

	Mean	Std. Deviation(a)	Analysis N(a)	Missing N
HV206 Has electricity	.11	.313	12315	0
HV207 Has radio	.56	.496	12315	0
HV208 Has television	.12	.320	12315	0
HV209 Has refrigerator	.08	.277	12315	0
HV210 Has bicycle	.32	.465	12315	0
HV211 Has motorcycle/scooter	.01	.117	12315	0
HV212 Has car/truck	.03	.179	12315	0
HV221 Has telephone	.02	.155	12315	0
DOMESTIC If HH has a domestic worker not related to head	.01	.087	12315	0
OWNLAND If household works own or family's agric. land	.49	.500	12315	0
H2OIRES Piped into dwelling	.08	.265	12315	0
H2ONBER Piped into neighbor's house	.08	.273	12315	0
H2OPUB Communal tap	.10	.294	12315	0
H2IOWELL Open well on own land	.03	.157	12315	0
H2NOWELL Open well on neighbor's land	.04	.196	12315	0
H2POWELL Unprotected public well	.34	.472	12315	0
H2PBWELL Protected public well	.17	.376	12315	0
H2OSURF Surface water-river, lake, etc.	.15	.359	12315	0
H2ORAIN Water from rain	.01	.088	12315	0
H2OOTH Other water source	.01	.119	12315	0
FLUSH Flush toilet	.03	.182	12315	0
LATPIT Traditional pit latrine	.50	.500	12315	0
LATPIT2 'No flush' toilet	.02	.135	12315	0
LATBUSH No facility/bush/field	.44	.496	12315	0
FLUSHSHR Shared Flush toilet	.00	.030	12315	0
LATPITSH Shared Traditional pit latrine	.09	.289	12315	0
LATPIT2S Shared 'No flush' toilet	.00	.047	12315	0
DIRTFLOO Clay floor	.70	.458	12315	0
WOODFLOO Rudimentary wood plank floor	.00	.016	12315	0
ADOBFLOO Adobe, mud brick floor	.02	.132	12315	0
CEMTFLOO Cement floor	.26	.439	12315	0
BRCKFLOO Brick floor	.00	.064	12315	0
PRQFLOO Parquet, wood tile floor	.02	.123	12315	0

Component Score Coefficient Matrix

	Component
	1
HV206 Has electricity	.116
HV207 Has radio	.047
HV208 Has television	.117
HV209 Has refrigerator	.116
HV210 Has bicycle	-.015
HV211 Has motorcycle/scooter	.030
HV212 Has car/truck	.077
HV221 Has telephone	.080
DOMESTIC If HH has a domestic worker not related to head	.032
OWNLAND If household works own or family's agric. land	-.061
H2OIRES Piped into dwelling	.104
H2ONBER Piped into neighbor's house	.033
H2OPUB Communal tap	.016
H2IOWELL Open well on own land	.007
H2NOWELL Open well on neighbor's land	.001
H2POWELL Unprotected public well	-.051
H2PBWELL Protected public well	-.018
H2OSURF Surface water-river, lake, etc.	-.033
H2ORAIN Water from rain	.001
H2OOTH Other water source	.001
FLUSH Flush toilet	.094
LATPIT Traditional pit latrine	.026
LATPIT2 'No flush' toilet	.043
LATBUSH No facility/bush/field	-.072
FLUSHSHR Shared Flush toilet	.014
LATPITSH Shared Traditional pit latrine	.005
LATPIT2S Shared 'No flush' toilet	.013
DIRTFLOO Clay floor	-.105
WOODFLOO Rudimentary wood plank floor	.010
ADOBFLOO Adobe, mud brick floor	-.007
CEMTFLOO Cement floor	.087
BRCKFLOO Brick floor	.030
PRQFLOO Parquet, wood tile floor	.070

Sum over each variable

	If has	If does not have
HV206 Has electricity	0.330005352	-0.040866697
HV207 Has radio	0.041289117	-0.053275785
HV208 Has television	0.322936207	-0.042257493
HV209 Has refrigerator	0.38315323	-0.035008063
HV210 Has bicycle	-0.022562715	0.010405942
HV211 Has motorcycle/scooter	0.251616852	-0.003543024
HV212 Has car/truck	0.415977266	-0.014253693
HV221 Has telephone	0.505196513	-0.012700354
DOMESTIC If HH has a domestic worker not related to head	0.370348542	-0.002848602
OWNLAND If household works own or family's agric. land	-0.062934358	0.059756258
H2OIRES Piped into dwelling	0.36382315	-0.029892324
H2ONBER Piped into neighbor's house	0.112414184	-0.0099566
H2OPUB Communal tap	0.050358611	-0.005326609
H2IOWELL Open well on own land	0.042225427	-0.001097587
H2NOWELL Open well on neighbor's land	0.003700424	-0.000154967
H2POWELL Unprotected public well	-0.072253354	0.036524159
H2PBWELL Protected public well	-0.040302945	0.008290238
H2OSURF Surface water-river, lake, etc.	-0.077491739	0.013926095
H2ORAIN Water from rain	0.007121822	-5.59534E-05
H2OOTH Other water source	0.006112881	-8.96509E-05
FLUSH Flush toilet	0.501013179	-0.017821104
LATPIT Traditional pit latrine	0.025406829	-0.025593187
LATPIT2 'No flush' toilet	0.313355761	-0.005963742
LATBUSH No facility/bush/field	-0.081573875	0.063011944
FLUSHSHR Shared Flush toilet	0.480371049	-0.00042946
LATPITSH Shared Traditional pit latrine	0.016411954	-0.001662918
LATPIT2S Shared 'No flush' toilet	0.28467792	-0.000625513
DIRTFLOO Clay floor	-0.068776997	0.161133078
WOODFLOO Rudimentary wood plank floor	0.627109815	-0.000152805
ADOBFLOO Adobe, mud brick floor	-0.048864081	0.000880579
CEMTFLOO Cement floor	0.147113068	-0.052018327
BRCKFLOO Brick floor	0.465701239	-0.001936625
PRQFLOO Parquet, wood tile floor	0.560359845	-0.008687033

OTHFLOO Other type of flooring	.00	.013	12315	0
COOKELEC Electricity for cooking	.0097	.09783	12315	0
COOKGAS LPG, natural gas for cooking	.0210	.14322	12315	0
COOKKERO Kerosene for cooking	.0058	.07624	12315	0
COOKCOAL Coal, lignite for cooking	.1483	.35539	12315	0
COOKCHAR Charcoal for cooking	.0055	.07411	12315	0
COOKWOOD Wood, straw for cooking	.8054	.39588	12315	0
COOKDUNG Dung for cooking	.0019	.04410	12315	0
COOKOTH Other fuel for cooking	.0014	.03713	12315	0

For each variable, missing values are replaced with the variable mean.

OTHFLOO Other type of flooring	.000	0.035314384	-5.73611E-06
COOKELEC Electricity for cooking	.045	0.457716865	-0.00446608
COOKGAS LPG, natural gas for cooking	.076	0.518800264	-0.011101474
COOKKERO Kerosene for cooking	.016	0.20656354	-0.001214782
COOKCOAL Coal, lignite for cooking	.077	0.183665345	-0.031973774
COOKCHAR Charcoal for cooking	.009	0.124056303	-0.000688808
COOKWOOD Wood, straw for cooking	-0.112	-0.055111161	0.228150085
COOKDUNG Dung for cooking	-0.001	-0.026599564	5.19396E-05
COOKOTH Other fuel for cooking	.001	0.017292239	-2.39037E-05

Extraction Method: Principal Component Analysis. Component Scores.

National score

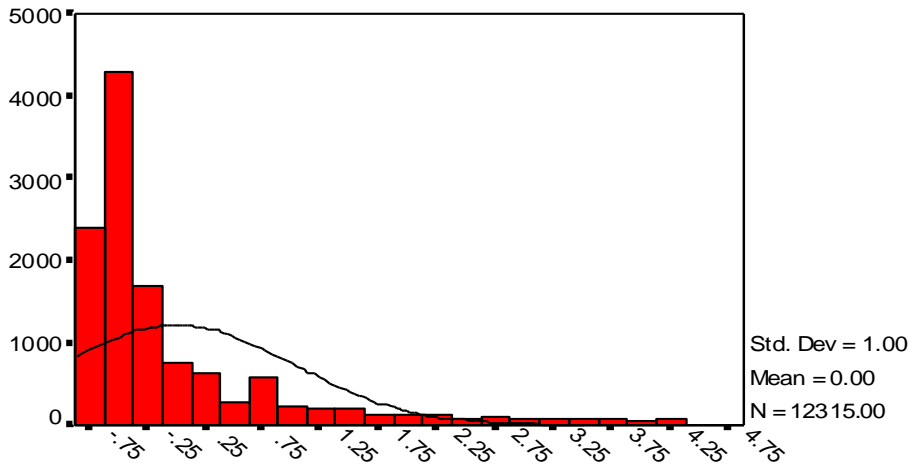
Statistics

FAC1_1 REGR factor score 1 for analysis 1

N	Valid	12315
	Missing	0
Mean		.000000
Std. Error of Mean		.0090112
Median		-.41457
Mode		-.72279000
Std. Deviation		1.000
Variance		1.000
Skewness		2.257
Std. Error of Skewness		.022
Kurtosis		5.04700
Std. Error of Kurtosis		.04400
Minimum		-.7557600
Maximum		4.8556600
Percentiles	20	-.6108630
	40	-.4881724
	60	-0.3099463
	80	0.4201024

Distribution of Households by Wealth Scores

Mozambique 2003



REGR factor score 1 for analysis 1

Report

Mean

	NFAC1_1 NTILES of FAC1_1					
	1	2	3	4	5	Total
HV206 Has electricity	0.000	0.000	0.002	0.024	0.486	0.081
HV207 Has radio	0.313	0.367	0.592	0.660	0.813	0.532
HV208 Has television	0.000	0.000	0.000	0.010	0.539	0.086
HV209 Has refrigerator	0.000	0.000	0.000	0.001	0.379	0.059
HV210 Has bicycle	0.478	0.232	0.390	0.314	0.200	0.326
HV211 Has motorcycle/scooter	0.000	0.000	0.002	0.012	0.051	0.011
HV212 Has car/truck	0.000	0.000	0.000	0.007	0.128	0.021
HV221 Has telephone	0.000	0.000	0.000	0.000	0.106	0.016
DOMESTIC If HH has a domestic worker not related to head	0.000	0.000	0.000	0.001	0.034	0.005
OWNLAND If household works own or family's agric. land	1.000	0.493	0.601	0.295	0.105	0.518
H2OIRES Piped into dwelling	0.000	0.000	0.000	0.004	0.333	0.053
H2ONBER Piped into neighbor's house	0.000	0.000	0.006	0.117	0.281	0.068
H2OPUB Communal tap	0.000	0.023	0.070	0.180	0.204	0.088
H2IOWELL Open well on own land	0.000	0.012	0.023	0.038	0.037	0.021
H2NOWELL Open well on neighbor's land	0.000	0.018	0.036	0.077	0.041	0.033
H2POWELL Unprotected public well	0.622	0.585	0.451	0.258	0.022	0.411
H2PBWELL Protected public well	0.092	0.137	0.224	0.227	0.054	0.151
H2OSURF Surface water-river, lake, etc.	0.286	0.209	0.171	0.062	0.010	0.156
H2ORAIN Water from rain	0.000	0.003	0.004	0.014	0.008	0.006
H2OOTH Other water source	0.000	0.013	0.015	0.022	0.009	0.012
FLUSH Flush toilet	0.000	0.000	0.000	0.000	0.151	0.023
LATPIT Traditional pit latrine	0.000	0.115	0.672	0.828	0.721	0.446
LATPIT2 'No flush' toilet	0.000	0.000	0.000	0.001	0.086	0.014
LATBUSH No facility/bush/field	1.000	0.877	0.313	0.160	0.038	0.509
FLUSHSHR Shared Flush toilet	0.000	0.000	0.000	0.000	0.004	0.001
LATPITSH Shared Traditional pit latrine	0.000	0.008	0.143	0.158	0.127	0.083
LATPIT2S Shared 'No flush' toilet	0.000	0.000	0.000	0.001	0.009	0.002
COOKELEC Electricity for cooking	0.000	0.000	0.000	0.000	0.049	0.008
COOKGAS LPG, natural gas for cooking	0.000	0.000	0.000	0.000	0.092	0.014
COOKKERO Kerosene for cooking	0.000	0.000	0.000	0.000	0.029	0.005
COOKCOAL Coal, lignite for cooking	0.000	0.000	0.000	0.114	0.663	0.126
COOKCHAR Charcoal for cooking	0.000	0.000	0.000	0.010	0.013	0.004
COOKWOOD Wood, straw for cooking	1.000	1.000	0.996	0.866	0.152	0.840
COOKDUNG Dung for cooking	0.000	0.000	0.004	0.003	0.001	0.002
COOKOTH Other fuel for cooking	0.000	0.000	0.000	0.003	0.002	0.001