

2008 Nigeria Demographic and Health Survey (NDHS): North East

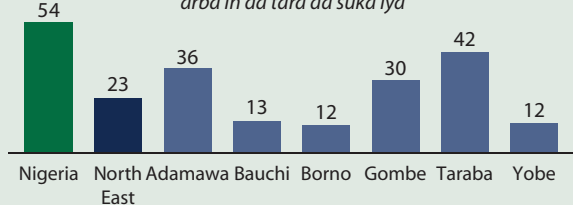
Bincike na kasa da kiwon lafiyar jama'a na 2008 yana bada cikakken bayani akan jama'a da lafiyarsu a Najeriya. Binciken na 2008, shine na hudu da akayi a kasar nan.

Bincike na kasa anyi shi ne akan samfuri da ya kunshi kowane bangare na kasar nan. Ya na bada kwatankwaci na kauye da birni na kasar nan, kowacce shiyya daga cikin shiyyoyi shida na kasar nan, kowacce jiha, da kuma yankunan babban birnin tarayya—Abuja.

	Number	Amsosi
Gidajen da akayiwa tambayoyi	34,070	98%
Mata 'yan shekara shabiyar zuwa arba'in da tara da akayiwa tambayoyi	33,385	97%
Maza 'yan shekara shabiyar zuwa arba'in da tara da akayiwa tambayoyi	15,486	93%

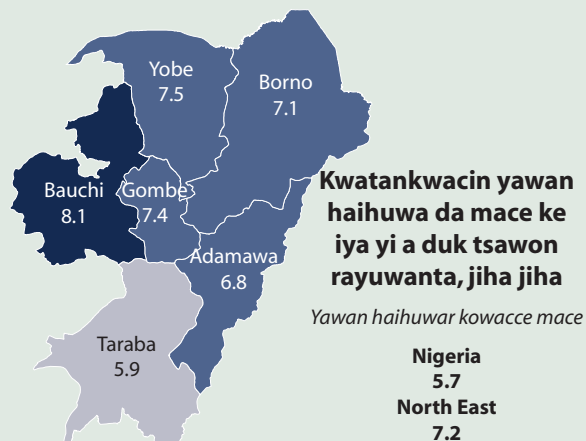
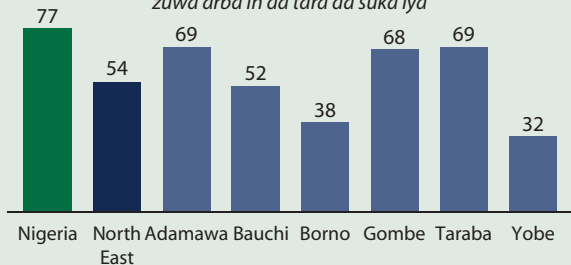
Mata da suka iya karatu da rubutu da fahimta a kowane harshe

Adadin mata yan shekara sha biyar zuwa arba'in da tara da suka iya



Maza da suka iya karatu da rubutu da fahimta a kowane harshe

Adadin maza yan shekara sha biyar zuwa arba'in da tara da suka iya



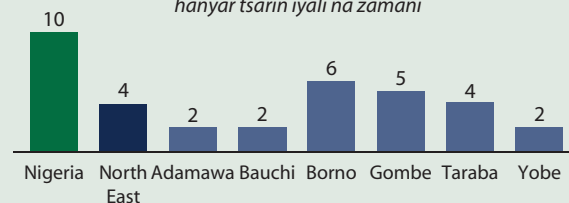
Kwatankwacin yawan haihuwa da mace ke iya yi a duk tsawon rayuwanta, jiha jiha

Yawan haihuwar kowacce mace

Nigeria
5.7
North East
7.2

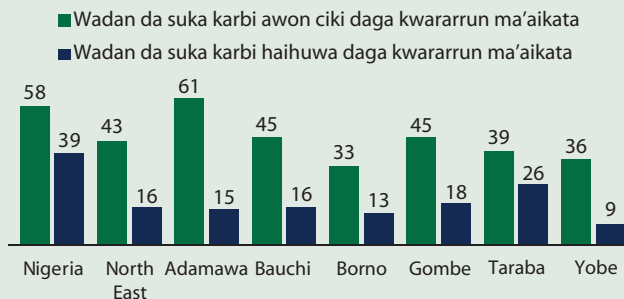
Amfani da hanyoyi na tsarin iyali

Adadin mata masu aure yan shekara shabiyar zuwa arba'in da tara da suke amfani da hanyar tsarin iyali na zamani



Lafiyar mata lokacin da suke da juna biyu, yayin haihuwa da kuma lokaci kadan bayan haihuwa

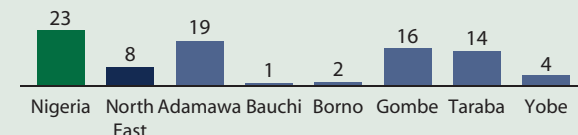
Adadin mata da suka haifi yara masu rai a cikin shekara biyar kafin wannan bincike



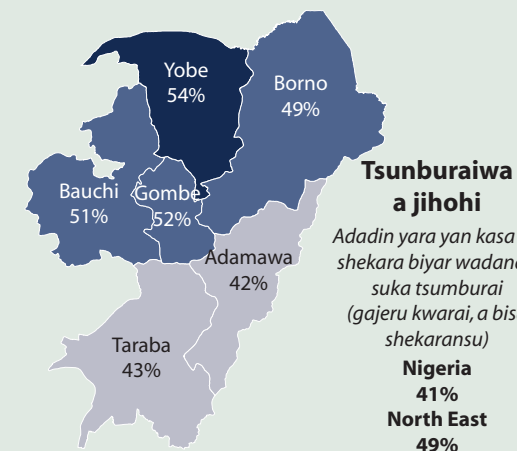
* Kwararrun ma'aikata sun hada da likitoci, ma'aikatan jinya/ungozoma ko kananan ma'aikatan jinya/ungozoma

Karbar allurar riga kafi

Adadin yara yan shekara shabiyu zuwa ashirin da uku da suka karbi duk alluran riga kafi



* Chikakken kariya ya kunshi karban allurai da suka hada da na BCG, kyanda da kuma guda uku kowane na DPT da polio



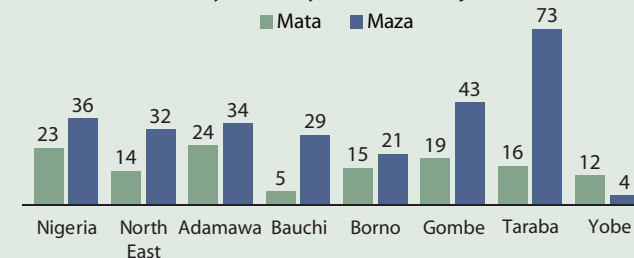
Tsunburaiwa a jihohi

Adadin yara yan kasa da shekara biyar wadanda suka tsumburai (gajeru kwarai, a bisa shekaransu)

Nigeria
41%
North East
49%

Cikakken masaniya akan kariya daga cutar kanjamau

Adadin 'yan shekaru shabiyar zuwa arba'in da suke da cikakkiyar masaniya akan cutar kanjamau



* Abinda ake nufi da cikakkiyar masaniya shine sanin cewa amfani da kororon roba akai akai lokacin jima'i da kur tarawa da abokin/abokiyar jima'i guda daya wanda bai kamu da cutar kanjamau ba na rage hadarin kamuwa da ciwon kanjamau, masaniyar cewa zai iya yiwuwa mutumen da ke kama da lafiyayye na da cutar kanjamau, da kur kin yin amfani da rashin fahimtar sanannun hanyoyi biyun nan na yanda kwayoyin cutar kanjamau suke yaduwa, da kuma kariya.

2008 Nigeria Demographic and Health Survey

Fact Sheet

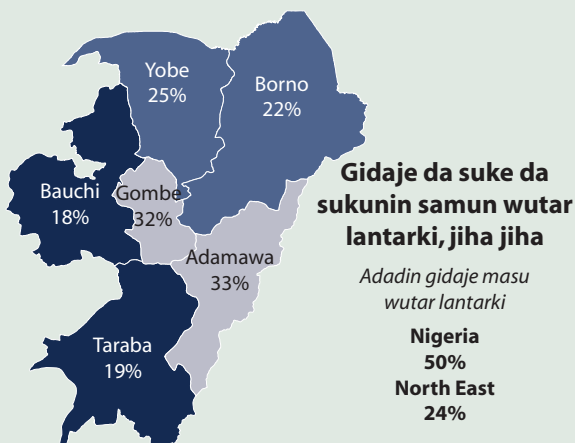
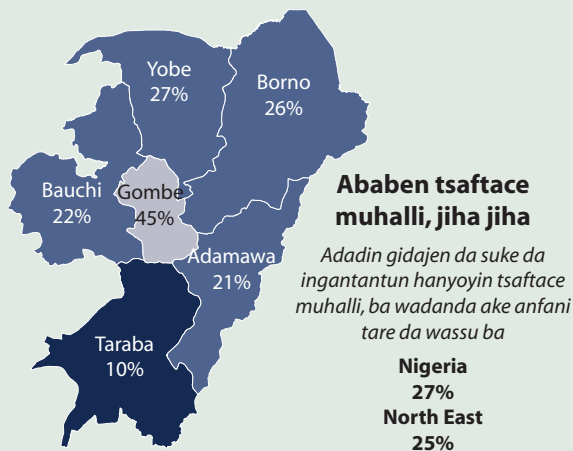
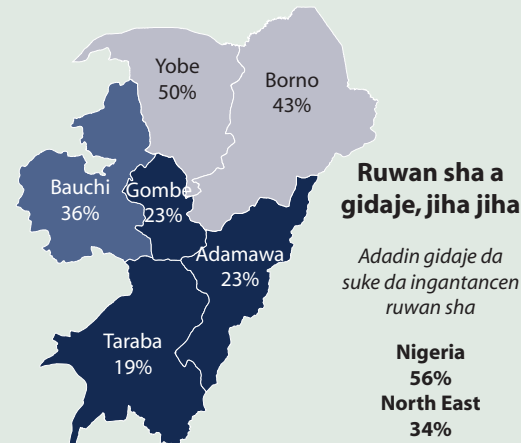
North East Zone Hausa

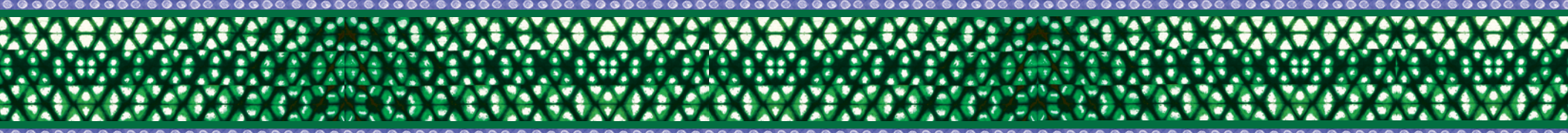
Domin karin bayani akan sakamakon bincike na kasa kan yanayin rayuwa da kiwon lafiyar jama'a na shekara ta 2008, a tuntubi:

A Najeriya:
National Population Commission
Plot 2031, Olusegun Obasanjo Way,
Zone 7 Wuse, PMB 0281
Abuja, Nigeria
Telephone: (234) 09 523-9173
Fax: (234) 09 523-1024
Website: www.population.gov.ng

A Amirka:
MEASURE DHS, ICF Macro
11785 Beltsville Drive
Calverton, MD 20705 USA
Telephone: 301-572-0200
Fax: 301-572-0999
Website: www.measuredhs.com

Hukumar Kidayar Jama'a ta Kasar Nigeria ce ta gudanar da bincike kan Kididdiga da Kiwon Lafiya ta Kasa na 2008. ICF Macro, Kamfanin ICF na kasa da kasa aiwatarwa da kuma nazartar binciken. Hukumar Taimakon Cigaban Kasa ta Amurka (USAID) da kuma asusun Shugaban Kasa ta Amurka (USAID) gaggawa kan cutar Kanjamau (PEPFAR) ne suka bada kudin aiwatarwa ta hannun MEASURE DHS. Kudin lisafin magidanta da sauran taimakon ayyuka ya zo ne daga Asusun Kididdigar Jama'a na Majalisar Dinkin Duniya (UNFPA).





North East Zone	State							
	Nigeria	North East Zone	Adamawa	Bauchi	Borno	Gombe	Taraba	Yobe
Haife-haife								
Kwatankwacin yawan haihuwa da mace ke iya yi duk tsawon rayuwanta	5.7	7.2	6.8	8.1	7.1	7.4	5.9	7.5
Iyaye mata ko masu juna biyu, yan shekara goma shabiyar zuwa sha tara (15-19)(%)	23	39	24	51	48	47	22	42
Haihuwa kasa da shekara biyu tsakanin sako da sako (%)	24	25	26	23	33	21	17	24
Tsarin iyali								
Mata 'yan shekara 15-49 da suke da aure a lokacin bincike masu amfani da hanyar tsarin iyali ta zamani (%)	10	4	2	2	6	5	4	2
Lafiyar mata da jariran su								
Kulawa da mata da ya shafi ciki da haihuwa								
Mata masu haihuwa da kwararrun maaikata suka yiwa awon ciki ¹ (%)	58	43	61	45	33	45	39	36
Haihuwa da kwararrun maaikata suka taimaka ¹ (%)	39	16	15	16	13	18	26	9
Haihuwa da akayi a cibiyar kiwon lafiya (%)	35	13	11	13	12	17	21	6
Allurar rigakafi ta yara								
Yara 'yan wata shabiyu zuwa ashirin da uku da akayiwa cikakkun allurorin rigakafi ² (%)	23	8	19	1	2	16	14	4
Yara 'yan wata shabiyu zuwa ashirin da uku da ba ayi masu allura ko guda na rigakafi ba (%)	29	33	14	27	57	26	8	57
Abubuwan gina jiki								
Yara 'yan kasa da shekara biyar tsumburarru (matsakaici ko matsananci) (%)	41	49	42	51	49	52	43	54
Yara 'yan kasa da shekara biyar ramammu ko marasa jiki (matsakaici ko matsananci) (%)	14	22	21	41	13	17	9	21
Yara 'yan kasa da shekara biyar marasa nauyi (matsakaici ko matsananci) (%)	23	35	31	52	28	28	18	39
Zazzabin cizon sauro								
Gidaje (magidanta) da suke da gidan sauro mai magani (ITN) a kalla guda daya (%)	8	7	4	7	3	20	9	5
Yara 'yan kasa da shekara biyar da suka kwana a cikin gidan sauro mai magani (ITN) daren wayewar ranar binciken (%)	6	4	2	4	1	12	4	2
Mata masu ciki da suka kwana a cikin gidan sauro daren wayewar ranar binciken (%)	5	6	2	8	3	15	4	4
Adadin mata masu ciki da suka karbi fiye da kashi biyu na maganin cutar cizon sauro (SP/Fansidar) na kariya (%)	5	3	2	1	1	4	5	8
A cikin yara 'yan kasa da shekara biyar da suke zazzabi, adadin wadanda suka karbi maganin kariya daga cutar cizon sauro a ranar ko kashegari (%)	15	12	36	8	4	4	30	10
Masaniya kan cutar kanjamau								
Wadanda suka san cewa hatsarin kamuwa daga cutar kanjamau zai iya raguwa idan:	Mata/ Maza	Mata/ Maza	Mata/ Maza	Mata/ Maza	Mata/ Maza	Mata/ Maza	Mata/ Maza	Mata/ Maza
An tsaya da abokin/abokiyar jima'i daya (%)	68/83	62/82	81/93	66/96	47/79	56/97	85/96	36/11
Anyi amfani da kororon roba (%)	53/72	39/72	57/82	26/82	31/61	53/77	50/92	22/26
Masaniya akan cewa mutun mai kyakkyawar kama na iya dauke da cutar kanjamau (%)	66/78	54/71	61/76	58/82	44/52	54/89	71/94	34/27
Masaniya cewa jinjiri zai iya kamuwa da cutar kanjamau ta hanyar shayarwa (%)	52/59	40/52	47/65	47/60	24/28	53/53	56/86	21/20
Masaniyar hatsarin kamuwar yaro da cutar kanjamau daga wurin uwa zai iya raguwa idan uwa tana shan magani na musamman lokacin da take da ciki (%)	28/39	29/52	42/58	22/66	17/23	44/84	42/63	16/13
Yanayin gidaje								
Gidaje da suke da ingantattun hanyar samar da ruwan sha (%)	56	34	23	36	43	23	19	50
Gidaje masu wutar lantarki (%)	50	24	33	18	22	32	19	25
Gidaje da suke da ingantattun bandakuna (%)	27	25	21	22	26	45	10	27
Ilmi								
Masu iya karatu da rubutu da fahimta a kowanne harshe (%)	54/77	23/54	36/69	13/52	12/38	30/68	42/69	12/32
Marasa iya karatu da rubutu da fahimta a kowanne harshe (%)	36/19	68/45	51/23	77/51	81/64	65/39	47/20	81/68

¹ Kwararrun ma'aikata sun hada da likitoci, ma'aikatan jinya/ungozoma ko kananan ma'aikatan jinya/ungozoma. ² Chikakken kariya ya kunshi karban allurai da suka hada da na BCG, kyanda da kuma guda uku kowanne na DPT da polio.