



# DHS at PAA

Visit our booth **#323** for free publications, tours of our web and mobile tools, and access to DHS experts



## DHS staff present:

**Trends in Neonatal Mortality in Sub-Saharan Africa since 2000** • Rebecca Winter, The DHS Program, ICF International; Lia Florey, The DHS Program, ICF International; Anne Langston, ICF International; Thomas W. Pullum, The DHS Program, ICF International

Session 2: Maternal, Infant, and Child Health and Mortality. Thursday 5/1, 8:30-10:00 AM

**Fertility Transitions and Wealth in Comparative Perspective** • Sarah Staveteig, The DHS Program, Futures Institute.

Session 23: Fertility Transitions. Thursday 5/1, 10:15-11:45 AM

**Spousal Violence and Women's HIV Status** • Rebecca Winter, The DHS Program, ICF International; Kerry MacQuarrie, The DHS Program, Futures Institute; Sunita Kishor, The DHS Program, ICF International

Session 76: The Causes and Consequences of Gender-Based Violence. Thursday 5/1, 2:45-4:15 PM

**Unmet Need Among Young Women: A Global Comparison of Levels, Trends, and Components** • Kerry MacQuarrie, The DHS Program, Futures Institute

Session 146: Adolescent Sexual and Reproductive Health. Friday 5/2, 1:00-2:30 PM

**Spousal Violence in Sub-Saharan Africa: Structure, Forms, and Levels** • Kerry MacQuarrie, The DHS Program, Futures Institute; Rebecca Winter, The DHS Program, ICF International; Sunita Kishor, The DHS Program, ICF International

Session 177: Methodological Innovations in IPV Research. Saturday 5/3, 9:00-10:30 AM.

**Contextual Influences of Modern Contraceptive Use among Rural Women in Rwanda and Nepal** • Wenjuan Wang, The DHS Program, ICF International; Soumya Alva, John Snow, Inc.; Clara R. Burgert, The DHS Program, ICF International

Poster Session 7. Friday 5/2, 2:00-4:00 PM

**Understanding Patterns of HIV-Related Knowledge and Behaviors among People Living with HIV in Sub-Saharan Africa** • Wenjuan Wang, The DHS Program, ICF International; Soumya Alva, John Snow, Inc.; Shanxiao Wang, University of Maryland

Poster Session 8. Saturday 5/3, 9:00-11:00 AM

## DHS Staff as Moderators and Discussants:

**Effects of Policies and Programs and Events on Infant Mortality and Birth Outcomes** Thomas W. Pullum, The DHS Program, ICF International, Discussant

Session 141. Friday 5/2, 1:00-2:30 PM

**Happiness, Parenting, and Childbearing** Thomas W. Pullum, The DHS Program, ICF International, Chair

Session 217. Saturday, 5/3, 12:30-2:00 PM

## DHS at Side Meetings:

**Impact? Intrinsic? Value-add? The ins and outs of Data Visualization**, presentation at APLIC International Annual Conference, Erica Nybro, The DHS Program, JHUCCP and Amanda Makulec, JSI

Tuesday April 29th, 10:45-12:00 PM. Suffolk, 3rd Floor.

**New Ways to Access DHS Data**, The DHS Program and the Minnesota Population Center

Wednesday April 30th, 3:30-5:00 PM. Regis, 3rd Floor.

# New Publications

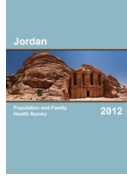
## Final Survey Reports



Benin DHS  
2011-12



Guinea DHS  
2012



Jordan DHS  
2012



Kyrgyz Rep.  
DHS 2012



Madagascar  
MIS 2013



Niger DHS  
2012



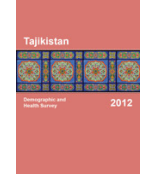
Pakistan DHS  
2012-13



Senegal Continuous  
DHS and SPA 2012-13



Senegal Continuous  
DHS and SPA 2012-13



Tajikistan DHS  
2012

## Analytical Studies, Comparative Reports, and Methodological Reports

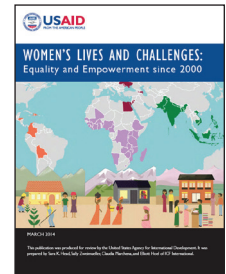
- Unmet Need for Family Planning among Young Women: Levels and Trends (CR34)
- Trends in Marriage and Contraception (AS42)
- Spousal Violence and HIV: Exploring the Linkages in Five Sub-Saharan African Countries (AS36)
- HIV Status and Cohabitation in Sub-Saharan Africa (AS35)
- The Effects of Fertility Behavior on Child Survival and Child Nutritional Status: Evidence from the Demographic and Health Surveys, 2006 to 2012 (AS37)
- Association between Economic Growth, Coverage of Maternal and Child Health Interventions, and Under-Five Mortality: A Repeated Cross-Sectional Analysis of 36 Sub-Saharan African Countries (AS38)
- Indicators of Child Deprivation in Sub-Saharan Africa: Levels and Trends from the Demographic and Health Surveys (CR32)
- Making the Demographic and Health Surveys Wealth Index Comparable (MR9)
- Women's Lives and Challenges: Equality and Empowerment since 2000 (OD66)

All publications are free at [www.DHSprogram.com](http://www.DHSprogram.com)

## Coming Soon

**DHS:** Comoros 2012, DR Congo 2013, Dominican Republic 2013, Gambia 2013, Liberia 2013, Mali 2013, Namibia 2013, Nigeria 2013, Philippines 2013, Sierra Leone 2013

**SPA:** Haiti 2013, Malawi 2013 **MIS:** Rwanda 2013



## What's new at DHS?

**We are now:** The DHS Program

**New website and DHS Program Blog:** [www.DHSprogram.com](http://www.DHSprogram.com); [blog.DHSprogram.com](http://blog.DHSprogram.com)

**New office location:** 530 Gaither Road, Rockville MD 20850, USA

**Mobile App** now available for Windows phones, updates available for Apple and Android devices

**Data Visualization Online Hub:** [datavizhub.co](http://datavizhub.co)

**IDHS data now available:** IPUMS-like datasets of DHS variables now available at [idhsdata.org](http://idhsdata.org)

**Jobs:** Visit [dhsprogram.com/Who-We-Are/Employment.cfm](http://dhsprogram.com/Who-We-Are/Employment.cfm) for more info on the following openings:

- Data Processing Specialist
- Senior Research Associate
- Biomarker and Lab Specialist
- Document Production Specialist