

Descriptive Statistics

	Mean	Deviation(a)	N(a)	Missing N
if water is piped into residence + 7 bottled	.15	.356	4998	0
if water is piped into compound/plot	.14	.351	4998	0
if gets water from a public tap	.12	.327	4998	0
if gets water from an open well in	.07	.252	4998	0
if gets water from an open well in yard	.07	.250	4998	0
if gets water from a public open well	.09	.292	4998	0
if gets water from a protected well in	.03	.181	4998	0
if gets water from a protected well in yard	.03	.163	4998	0
if gets water from a protected public well	.10	.296	4998	0
if gets water from a protected spring	.01	.101	4998	0
if gets water from an unprotected spring	.03	.171	4998	0
if gets water from surface + 10 other	.03	.166	4998	0
if uses flush toilet	.10	.302	4998	0
if uses pit latrine	.43	.494	4998	0
if uses own vip latrine	.05	.227	4998	0
if uses the bush	.29	.454	4998	0
if household has electric	.46	.498	4998	0
if household has radio	.56	.497	4998	0
if household has tv	.29	.452	4998	0
if household has fridge	.10	.296	4998	0
if household has bicycle	.38	.486	4998	0
if household has motorcycle or scooter	.15	.361	4998	0
if household has car or truck	.03	.176	4998	0
if household has phone	.17	.373	4998	0
if has a cart	.02	.155	4998	0
if floor is earth/mud/sand	.17	.379	4998	0
if floor is dung	.01	.087	4998	0
if floor is of wood planks	.00	.065	4998	0
if has linoleum flooring	.02	.144	4998	0
if flooring is of ceramic tiles	.06	.233	4998	0
if floor is of cement	.59	.491	4998	0
if has carpeted flooring + 13 cases	.01	.112	4998	0
For each variable, missing values are replaced with the variable mean.				

Component Score Coefficient Matrix

	Component 1
if water is piped into residence + 7	.137
if water is piped into compound/plot	.065
if gets water from a public tap	-.035
if gets water from an open well in	-.009
if gets water from an open well in yard	-.013
if gets water from a public open well	-.030
if gets water from a protected well in	-.006
if gets water from a protected well in yard	.002
if gets water from a protected public well	-.040
if gets water from a protected spring	-.019
if gets water from an unprotected spring	-.041
if gets water from surface + 10 other	-.039
if uses flush toilet	.136
if uses pit latrine	.051
if uses own vip latrine	.022
if uses the bush	-.117
if household has electric	.168
if household has radio	.110
if household has tv	.175
if household has fridge	.144
if household has bicycle	-.027
if household has motorcycle or scooter	.056
if household has car or truck	.095
if household has phone	.158
if has a cart	-.004
if floor is earth/mud/sand	-.100
if floor is dung	-.020
if floor is of wood planks	-.010
if has linoleum flooring	.038
if flooring is of ceramic tiles	.111
if floor is of cement	.050
if has carpeted flooring + 13 cases	.021
Extraction Method: Principal Component Analysis. <input type="checkbox"/> Component Scores.	

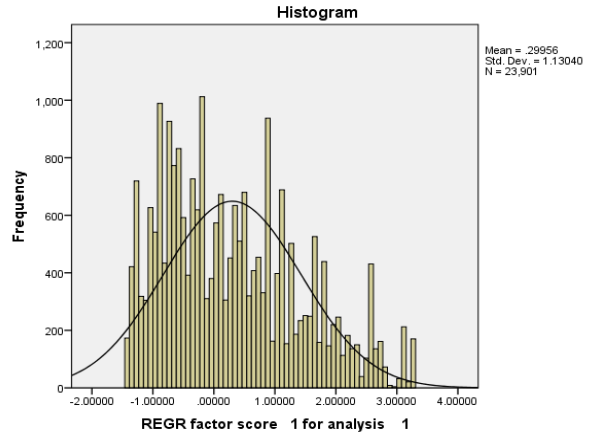
Sum over each variable	
If has	If does not have
0.32750613	-0.057098108
0.158537101	-0.026725567
-0.093179395	0.012905028
-0.034727204	0.002542834
-0.0496489	0.003578299
-0.09346986	0.009702039
-0.032039926	0.001128166
0.00930772	-0.000262324
-0.120866301	0.013018844
-0.182363199	0.001917284
-0.231950857	0.007226032
-0.228768262	0.006689681
0.03245181	-0.045623286
0.058799519	-0.043490769
0.090561474	-0.005212171
-0.183904654	0.074939463
0.182923109	-0.15481228
0.098076711	-0.12342686
0.276018559	-0.11084088
0.438182222	-0.047197819
-0.034019682	0.021024141
0.132420906	-0.024079375
0.520042623	-0.017198599
0.352141515	-0.070732894
-0.022783559	0.000574847
-0.217798247	0.045966143
-0.224162856	0.001717377
-0.154118218	0.000650288
0.260714773	-0.005649175
0.44844447	-0.027319797
0.041245429	-0.060203712
0.182957672	-0.00233563

National score

Statistics

REGR factor score_1 for analysis_1

	Valid		
	Missing		
N		23901	
Mean		.2995594	
Median		.1081087	
Mode		.32961	
Std. Deviation		1.13040035	
Skewness		.575	
Std. Error of Skewness		.016	
Kurtosis		-.501	
Std. Error of Kurtosis		.032	
Minimum		-1.43546	
Maximum		3.23870	
Percentiles			
	20		-.7434492
	40		-.2256664
	60		.4857353
	80		1.2958464



Cases weighted by HH members weighting for Index

Report

Mean

Wealth Index Quintiles	1	2	3	4	5	Total
if water is piped into residence + 7 bottled water	0.004	0.013	0.080	0.230	0.719	0.2088
if water is piped into compound/plot	0.004	0.078	0.245	0.434	0.238	0.1999
if gets water from a public tap	0.192	0.206	0.177	0.086	0.015	0.1352
if gets water from an open well in residence	0.061	0.124	0.098	0.046	0.004	0.0667
if gets water from an open well in yard	0.083	0.083	0.095	0.055	0.007	0.0646
if gets water from a public open well	0.136	0.225	0.150	0.034	0.003	0.1094
if gets water from a protected well in residence	0.023	0.034	0.025	0.052	0.006	0.028
if gets water from a protected well in yard	0.019	0.036	0.053	0.034	0.005	0.0292
if gets water from a protected public well	0.203	0.128	0.061	0.022	0.004	0.0837
if gets water from a protected spring	0.026	0.021	0.006	0.003	0.000	0.0111
if gets water from an unprotected spring	0.122	0.023	0.008	0.003	0.000	.03
if gets water from surface + 10 other	0.127	0.022	0.003	0.000	0.000	.03
if uses flush toilet	0.000	0.010	0.045	0.181	0.678	.18
if uses pit latrine	0.115	0.480	0.717	0.675	0.264	.45
if uses own vip latrine	0.022	0.041	0.077	0.089	0.055	.06
if uses the bush	0.863	0.459	0.162	0.055	0.004	.31
if household has electric	0.026	0.200	0.807	0.982	0.998	.60
if household has radio	0.299	0.653	0.643	0.887	0.953	.69
if household has tv	0.002	0.032	0.285	0.815	0.984	.42
if household has fridge	0.000	0.000	0.019	0.093	0.670	.16
if household has bicycle	0.502	0.597	0.447	0.278	0.189	.40
if household has motorcycle or scooter	0.054	0.107	0.179	0.203	0.211	.15
if household has car or truck	0.002	0.000	0.003	0.009	0.254	.05
if household has phone	0.000	0.009	0.046	0.376	0.860	.26
if has a cart	0.021	0.031	0.016	0.017	0.013	.02
if floor is earth/mud/sand	0.649	0.172	0.033	0.002	0.000	.17
if floor is dung	0.027	0.015	0.001	0.000	0.000	.01
if floor is of wood planks	0.008	0.003	0.006	0.004	0.003	.00
if has linoleum flooring	0.000	0.000	0.017	0.079	0.078	.03
if flooring is of ceramic tiles	0.000	0.007	0.020	0.039	0.379	.09
if floor is of cement	0.313	0.778	0.905	0.856	0.520	.67
if has carpeted flooring + 13 cases parquet	0.003	0.019	0.013	0.020	0.020	.01